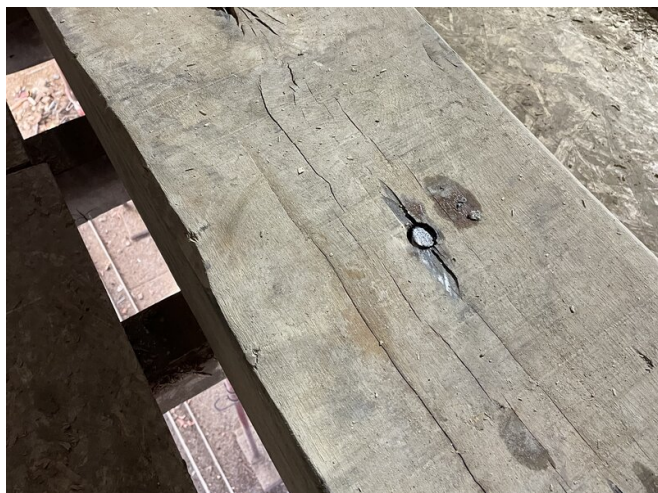


REFERENCE

SEVERAL KORACHEM PRODUCTS WERE USED TO STRUCTURALLY INTEGRATE THE RECOVERED OAK BEAMS — EACH 1200 KG — INTO THE BUILDING, BELGIUM



PROJECT	Several Korachem products were used to structurally integrate the recovered oak beams — each 1200 kg — into the building
SYSTEM	EPISOL® GM: to create a level surface EPICOL U NEW: to bond the massive oak beams EPICOL INJ LV: to anchor the large bolts to the wooden beams
AREA	
YEAR	2025
COUNTRY	Belgium
FIELD OF APPLICATION	Glues Repair & protection with resins - Mortars