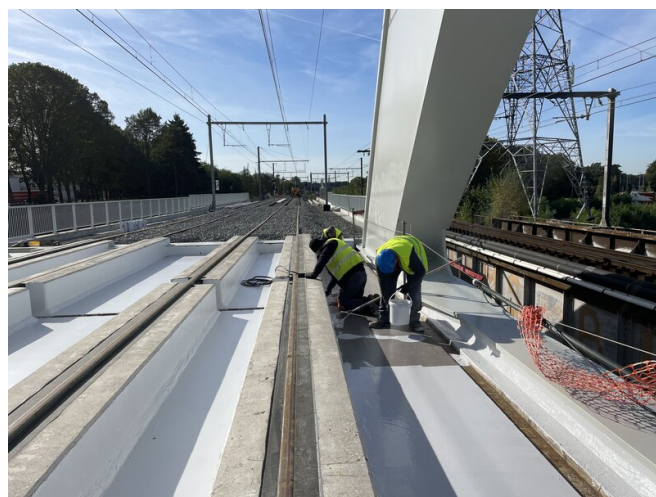


REFERENCE

NEW RAILWAY BRIDGE AT HERENTALS-LIER OVER ALBERT CANAL, BELGIUM



PROJECT	New railway bridge at Herentals-Lier over Albert Canal
SYSTEM	POLYAC® 18 POLYAC® BDM-M / POLYAC® BDM-M THIX POLYAC® 61
AREA	1.600 m ²
YEAR	2023
COUNTRY	Belgium
FIELD OF APPLICATION	Liquid waterproofing - Elastomeric membranes and wear layers - civil - Rail bridge waterproofing