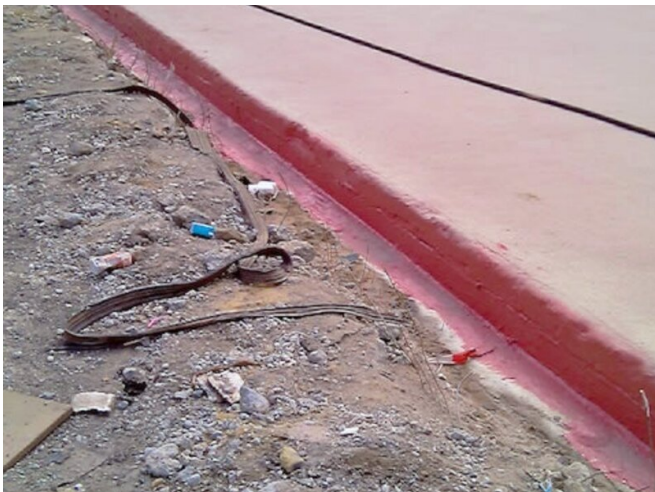


REFERENCE

BELOW-GRADE CONCRETE STRUCTURE OF SINT-MICHIELS METRO STATION AT BRUSSELS, BELGIË



PROJECT	Below-grade concrete structure of Sint-Michiels metro station at Brussels
SYSTEM	POLYAC® 12 POLYAC® BDM-HD
AREA	4.000 m ²
YEAR	2012
COUNTRY	België
FIELD OF APPLICATION	Elastomeric membranes and wear layers - civil - Below grade waterproofing