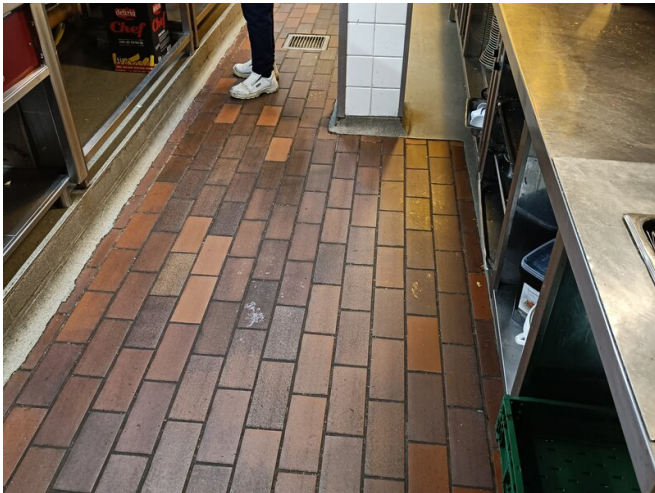


# REFERENCE

## MERCURE HOTEL AT ANTWERP, BELGIUM



PROJECT	Mercure hotel at Antwerp
SYSTEM	EPISOL® SLW 6-9mm EPISOL® PU 43 OP MAT EPISOL® WTF
AREA	160 m <sup>2</sup>
YEAR	2022
COUNTRY	Belgium
FIELD OF APPLICATION	Vapour-permeable floors Standard industry solutions