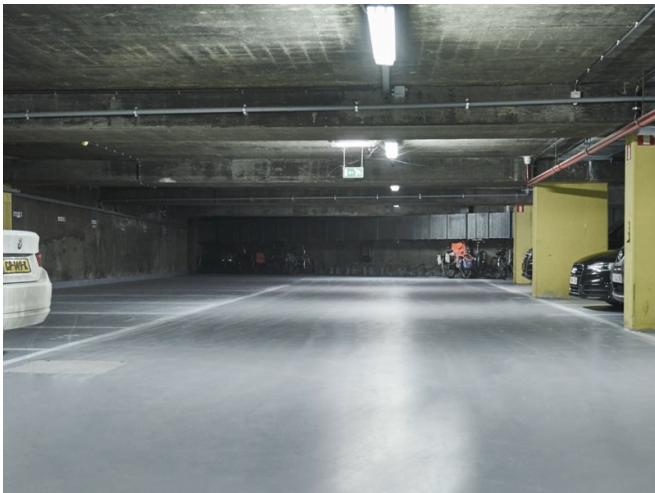


REFERENCE

UNDERGROUND PARKING OF ATLANTIC HOUSE OFFICE BUILDING AT ANTWERP, BELGIUM



PROJECT	Underground parking of Atlantic House office building at Antwerp
SYSTEM	Coating: EPISOL® PRIMER RFE - EPISOL® FLOORLINE IND - EPISOL® PU TOPCOAT WBN-P Restoration: EPISOL® PRIMER RFE - EPISOL® RM Injections: SPETEC® SEAL AG200 - SPETEC® STOP H100
AREA	950 m ²
YEAR	2018
COUNTRY	Belgium
FIELD OF APPLICATION	Sustainable parking management - Underground car parks and (above-ground) intermediate decks