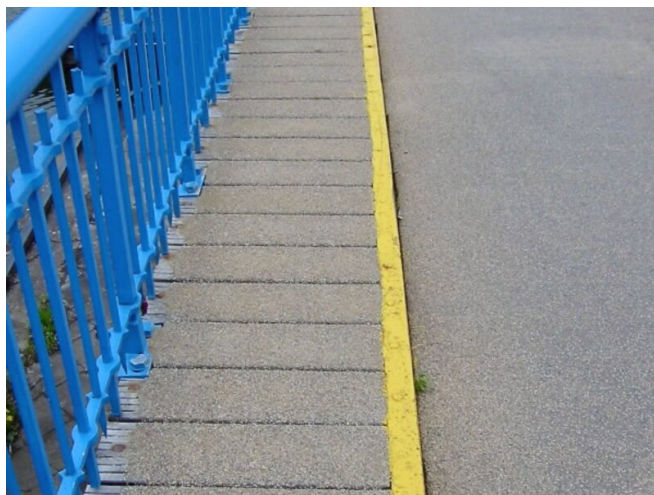
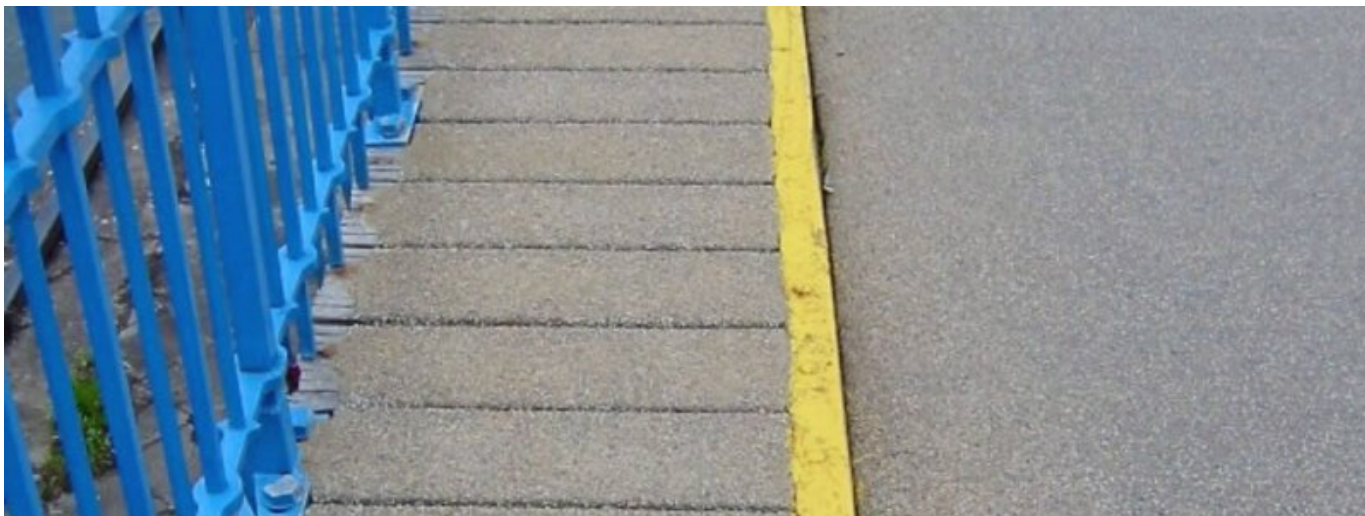


REFERENCE

BRIDGE OVER LEUVEN-DIJLE CANAL AT MECHELEN, BELGIË



| | |
|----------------------|---|
| PROJECT | Bridge over Leuven-Dijle canal at Mechelen |
| SYSTEM | POLYAC® 14 (wood) POLYAC® 15 (steel) POLYAC® BDM-M + quartz |
| AREA | 120 m ² |
| YEAR | 2012 |
| COUNTRY | België |
| FIELD OF APPLICATION | Liquidtight wear layers - Liquidtight wear layer on wood |