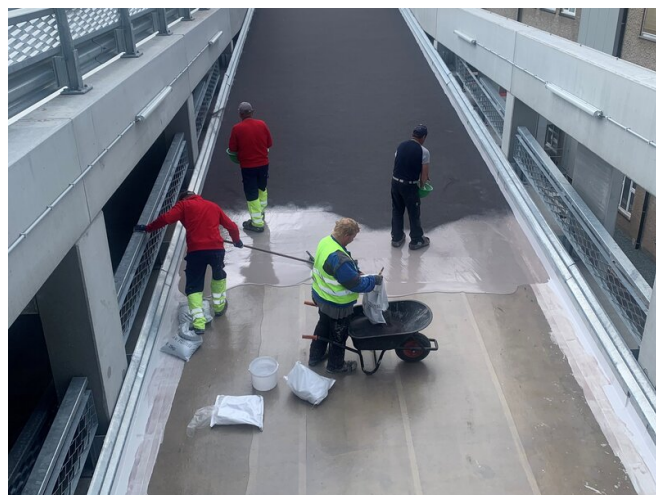


REFERENCE

PARKING BUILDING AZ-DELTA HOSPITAL AT TORHOUT,



PROJECT	Parking building AZ-Delta Hospital at Torhout
SYSTEM	POLYAC® 14 POLYAC® BDM-M+ POLYAC® BDM-AL + fleece POLYAC® 55 + quartz POLYAC® 61
AREA	
YEAR	
COUNTRY	
FIELD OF APPLICATION	Sustainable parking management - Waterproofing of parking roofs