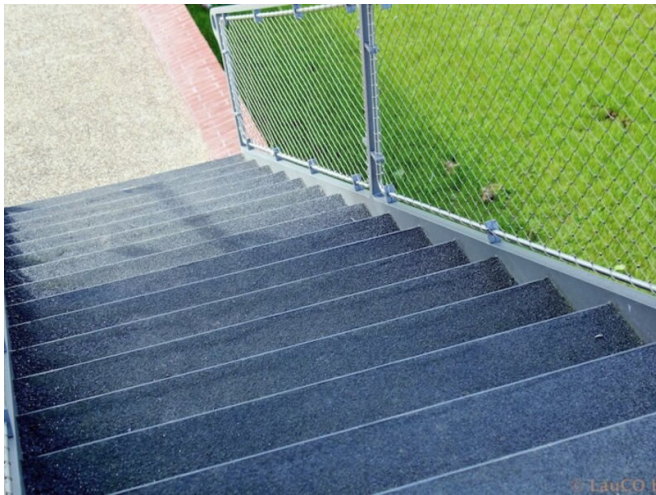


REFERENCE

COLLEGE BRIDGE - CYCLE AND PEDESTRIAN BRIDGE OVER LEIE IN KORTRIJK, BELGIUM



PROJECT	College Bridge - cycle and pedestrian bridge over Leie in Kortrijk
SYSTEM	POLYAC® 15 POLYAC® BDM-HD + Silicon Carbide
AREA	1.800 m ²
YEAR	2014
COUNTRY	Belgium
FIELD OF APPLICATION	Liquidtight wear layers - Waterproof wear layer on steel