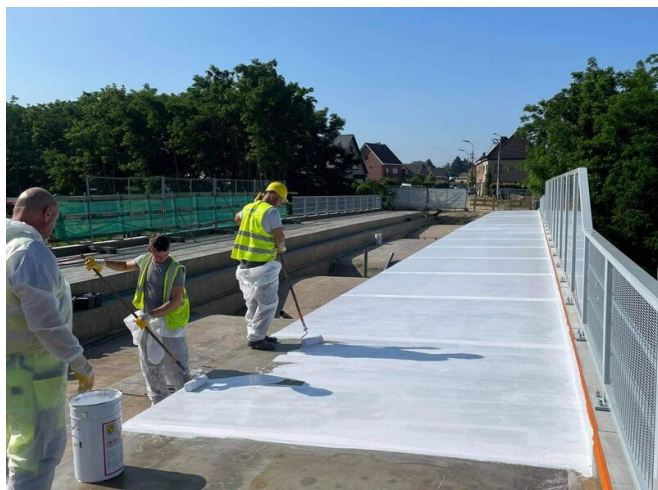


# REFERENCE

## MONUMENTAL HOGING BRIDGE OVER OSTEND-BRUSSELS RAILWAY LINE AT OORDEGEM, BELGIUM



PROJECT	Monumental Hoging Bridge over Ostend-Brussels railway line at Oordegem
SYSTEM	Zone 1: POLYAC® 14 - POLYAC® BDM-M (under bitumen webs) Zone 2: POLYAC® 14 - POLYAC® BDM-M + quartz sand - POLYAC® 61
AREA	700 m <sup>2</sup>
YEAR	2021
COUNTRY	Belgium
FIELD OF APPLICATION	Elastomeric membranes and wear layers - civil - Bridge deck waterproofing under asphalt